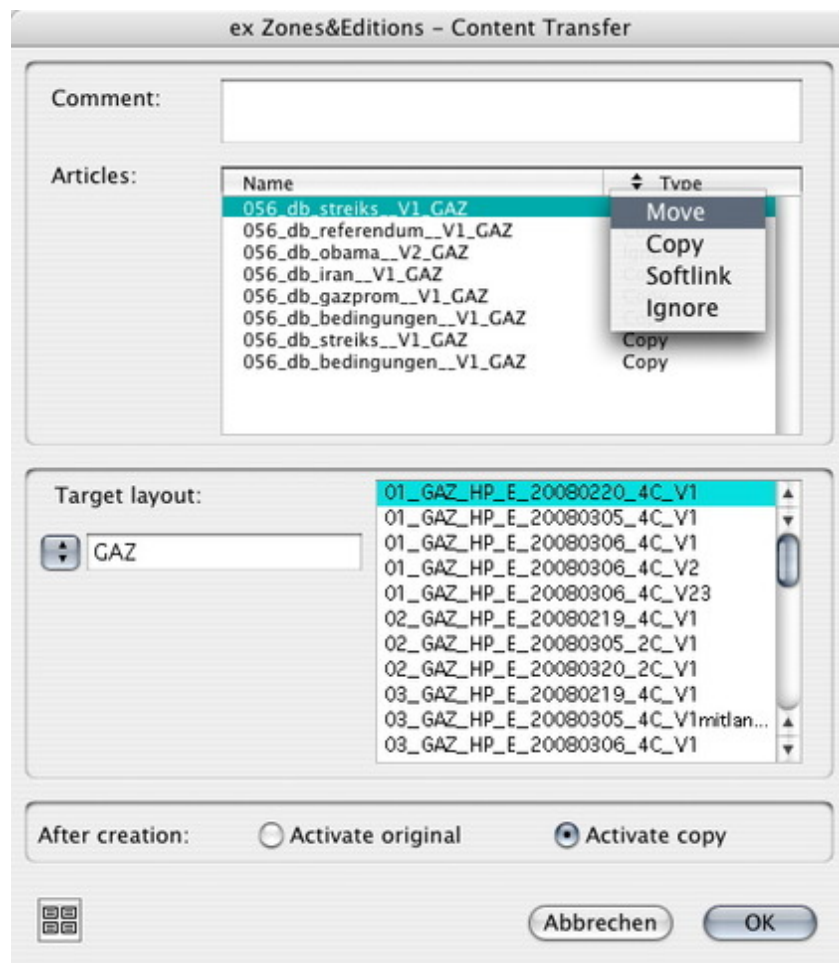


Transfer Page Content

The contents of a page can be transferred to another QPS-layout. Attached articles can either be moved, copied and ignored or a softlink can be established.



Category

- XTension

Theme

- Editorial Workflow

Developer

- CoDesCo



ex Zones&Editions

1.0

Operating System

Mac OS:

X 10.4

Win:

XP, Vista

Software

XPress:

6.5x

QPS:

3.5x

Language

English, German

Product Type

Demoverision (available on request), Full Version

Delivery Form

digital

Status

Product available

[Request Proposal](#)