

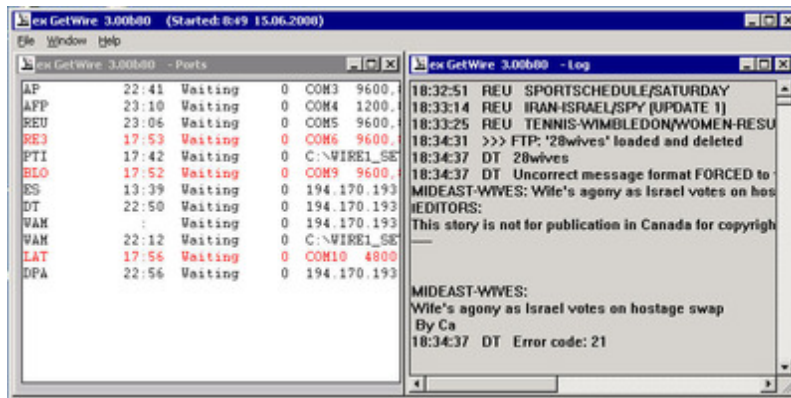
# ex GetWire

## Receiving and converting newswires

Newswires can be received in different ways: i.e. via satellite with a receiver and conversion into serial data or via modem. Some companies offer an API or a FTP transfer (push or pull).

Next to the different types of transfer newswires from different companies differ in the format. Next to standards as IPTC, NITF or NewsML there are several proprietary formats. All these formats have to be converted into a uniformed structure so that the customer can use one tool for all different newswires.

ex Getwire is doing these conversions. Using different filters and translators the newswires are put into a folder structure which is also used as a buffer in case the database is not ready (i.E. a backup is running). No single message may get lost. The last step is the import into the database, done by ex WireImporter or a print out done by ex WirePrint.



Each channel shows the details of received newswires.

