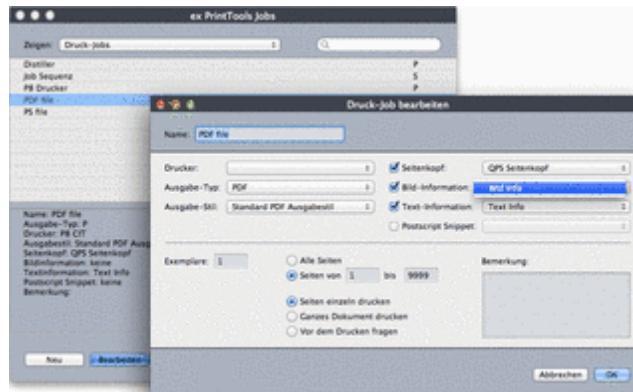


Output

The output of documents can be as PS, EPS or PDF. Acrobat Distiller is supported directly. The output with ex EPSCreator is possible.



The following specifications can be made for the output:

- Setting of the document type for the output data. Formats can be: PostScript (PS), Encapsulated PostScript (EPS) and Portable Document Format (PDF).
 - Naming the format of output. The name can be chosen over the printer tab for a print job.
 - Choice of the default folder, in which ex PrintTools shall move all documents to work on.
 - Choice of a target folder, in which ex PrintTools shall move all completed output data.
 - Naming of the output data. In this case it is possible to use predefined fields. It is possible to integrate further fields from QPS and QCM. Every field can be completed with own entries.
 - Under "ending" you can enter a data ending, this is necessary for the readability under Microsoft Windows.
-