

# exCopanLink

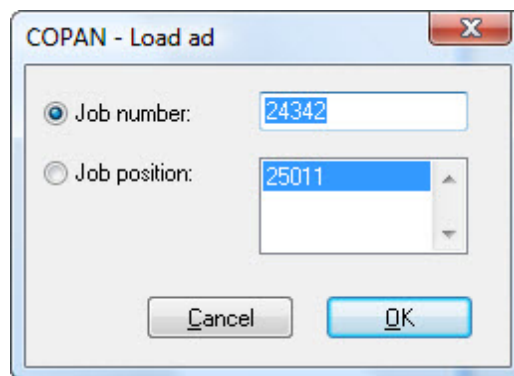
## Ad production with COPAN and QuarkXPress

ex COPANLink is the production interface linking COPAN and QuarkXPress.

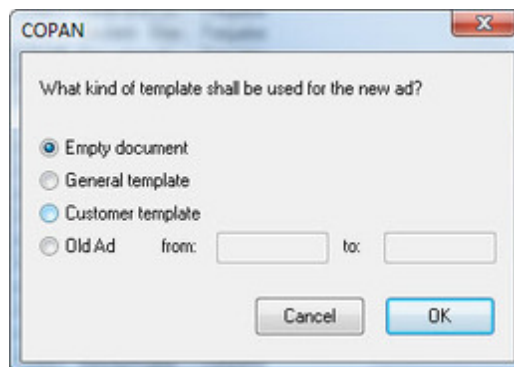
For new display ads, COPAN automatically creates a new QuarkXPress document with the desired geometry. Colors, images and other accompanying elements are automatically attached. In QuarkXPress the artist can easily find his tasks in the ex COPANLink palette using parameters like job number, customer name, catchline, status etc. Ads are checked out with a mouseclick; typical errors i.e. wrong geometries or colors are impossible as the document already has been created in COPAN. Existing ads are loaded from the COPAN server. For repeated ads COPAN creates a copy of the document. When the job is done the artist checks the ad back into COPAN. An automatic collect for output grants that all elements are present on the server. The ex EPSCreator XTension automatically creates an EPS file with embedded fonts for pagination. Price determining variables (i.e. colors or size) and the ad status are reported back to the COPAN system.

### Workflow:

Load the ad that has to be created by giving the job number or the job position:

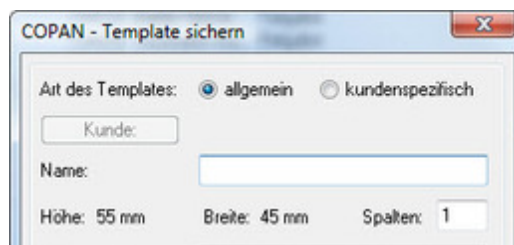


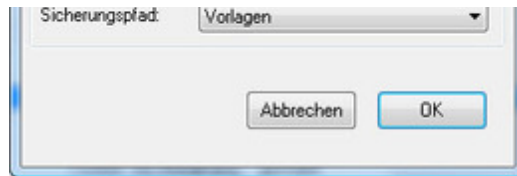
Thereupon a query appears where you have to choose which type of template you want to use for the ad that has to be created:



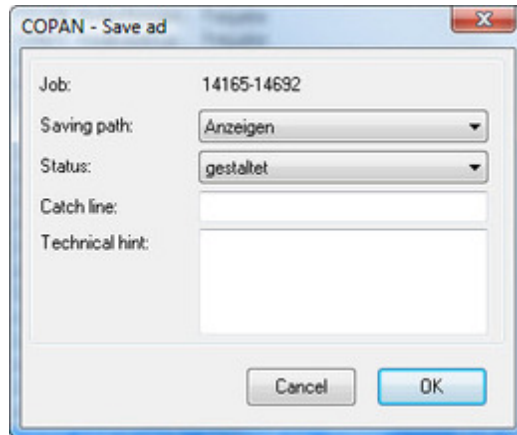
If you select "empty document", an XPress document opens in the defined size and frame that is set in the preferences. Needed colours, text and links to the logos will be transferred automatically.

As a matter of course general and customized templates can be selected.



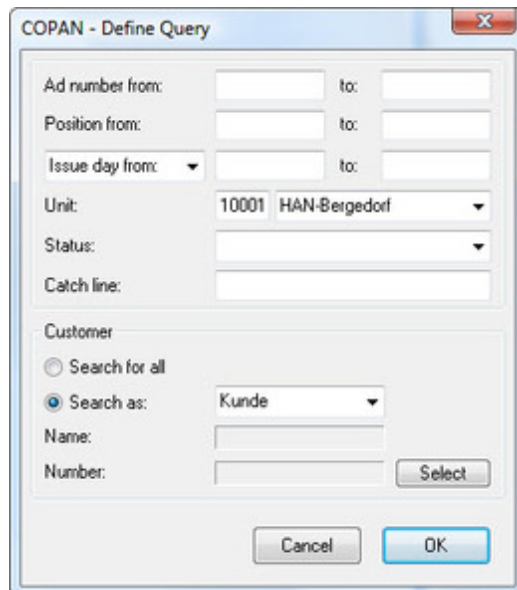


After the ad creation the created ads will be saved.

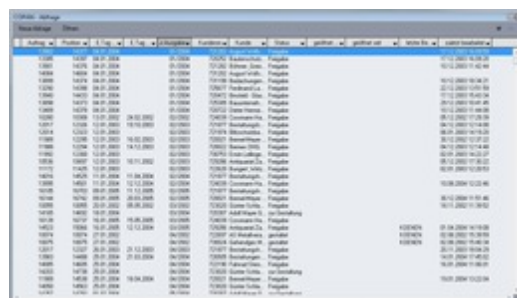


At this point an EPS or PDF file has been created automatically. Together with the source document (XPress) and all used graphics/pictures this file has been saved into a filesystem structure.

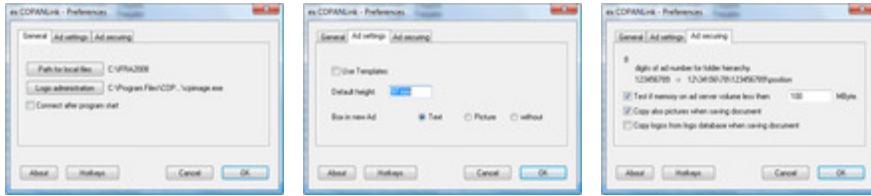
Thumbnail and preview of the created ad will be generated "on-the fly" and referenced in the database.



The query results and status will be shown in the following window:



The following basic settings can be chosen in the ex CopanLink preferences:



## Category

- XTension

## Theme

- Ad Production

## Related Products

- COPAN
- ex Ad2PlanPro
- ex AutoImport

## Developer

- CoDesCo



## ex COPANLink 9.0

### Operating System

#### Mac OS:

X10.0- X10.5, X 10.6, X  
10.7, X 10.8

#### Software

#### XPress:

9.x

#### QPS:

9.x

#### Language

German, English

#### Product Type

Demoersion (available  
on request)

#### Delivery Form

digital

#### Status

Product available

## Request Proposal

## ex COPANLink 8.0

### Operating System

#### Mac OS:

X 10.5, X 10.4

#### Win:

XP, Vista

#### Software

#### XPress:

8.x

#### Language

German, English

**Product Type**

Demoversion (available on request), Full Version

**Delivery Form**

digital

**Status**

Product available

[Request Proposal](#)

*ex COPANLink 1.0*

**Operating System**

**Mac OS:**

9

**Software**

**XPress:**

3.32, 4.1x

**Language**

German, English

**Product Type**

Full Version,  
Demoversion (available on request)

**Delivery Form**

digital

**Status**

Product available

[Request Proposal](#)