

XMP GeoTagger

Have you ever asked yourself...

..."Where is this"? while looking at old holiday photos? Some modern cameras use built-in GPS to save GPS coordinates along with the photo. If your camera does not feature GPS, **you can now tag photos manually with the help of XMP GeoTagger.**

Manual geotagging made easy:

Drag a photo onto the **XMP GeoTagger** executable. **If the photo already contains metadata** (cameras with GPS functionality will write this automatically), a map will open showing the location marked with a red pin.

Much more interesting is the possibility, based on address data in the XMP metadata fields to perform a **reverse search on spatial data.**

In the configuration file can be set which XMP fields are to be used to determine the spatial data. This feature allows older pictures without any geo data (e.g. from archive) complemented efficiently with spatial data. The procedure is similar to the search in Google Maps. The read data from the XMP can of course be manually changed. The map focus is automatically re-adjusted.

Note to Fotoware users: This application can be easily integrated as an action in **Fotostation!**

In the download area you can find a demo version with examples and detailed documentation.

You can use the map just like you would in your browser. You can zoom, pan, and change from map to satellite view.

Change the recorded position

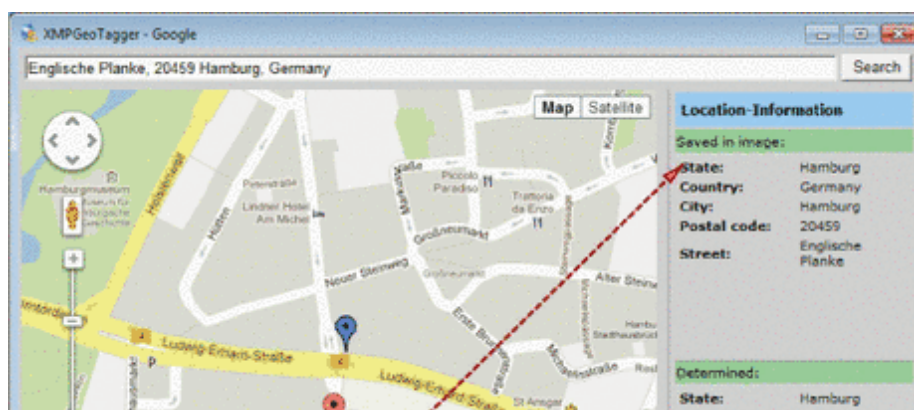
The **red pin** will be placed according to the metadata read from the photo. By adding a **blue pin** (Clicking on the map), a more accurate location can be set. Using the zoom and different map views can be helpful.

Assign coordinates to the photo

After placing the **blue pin**, the refresh button will determine new geodata based on the new position. Differences will be highlighted in yellow.

Hovering over the determined address will highlight them in red. Clicking on them will write the information back into the photo.

Clicking on "**Open in browser**" opens a browser window of the current map.





The possible applications for geotagged photos are endless.

- Documentation of construction sites
- Documentation of road and environmental damages
- Securing evidence after a car accident
- Photos of property with geoinformation
- Mapping of plants, nesting sites, bird nests etc.
- Geocoding photos while traveling
- Documentation of excavations in archaeology
- Land survey register **and many more**

License Agreements

Map and image data of Google Maps and other mapping services are subject to special license agreements.

The terms of use of Google Maps (and other services) are often offered free of charge, but not without license agreements. Google, as an example, offers their service only under specific license terms. Maps are often bound to websites and sharing or even printing them may not be allowed.

Commercial users must use the **Maps-API**. This API is subject to a charge.

CoDesCo IT Consulting GmbH states explicitly that buying or installing the software XMP Geotagger does NOT include a license for geodata.

Using XMP Geotagger without acquiring such a license is prohibited!

A service for geodata is queried while using **XMP GeoTagger**. The user is responsible for configuring and proper licensing of the service. Please make sure that you are compliant with the terms of agreement of your respective geodata provider (i.e. Google or Microsoft).

Category

- Software

Theme

- Asset Management

- Colors/Images

Related Products

- [FotoStation](#)
- Fotoware
Cameleon
- [FotoWeb](#)

Developer

- CoDesCo



[Download](#)

XMP GeoTagger WIN

Operating System

Win:

XP, Vista, Win 7

Software

cp.:

System Requirements

Language

German, English

Product Type

Demoversion (available
in download area),

Demoversion (available
on request)

Delivery Form

digital

Status

Product available

Price (Full Version)

99,- € net

[Request Proposal](#)