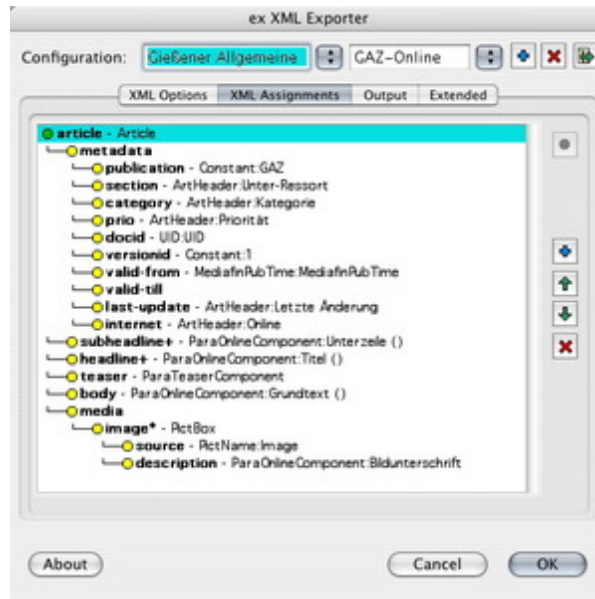
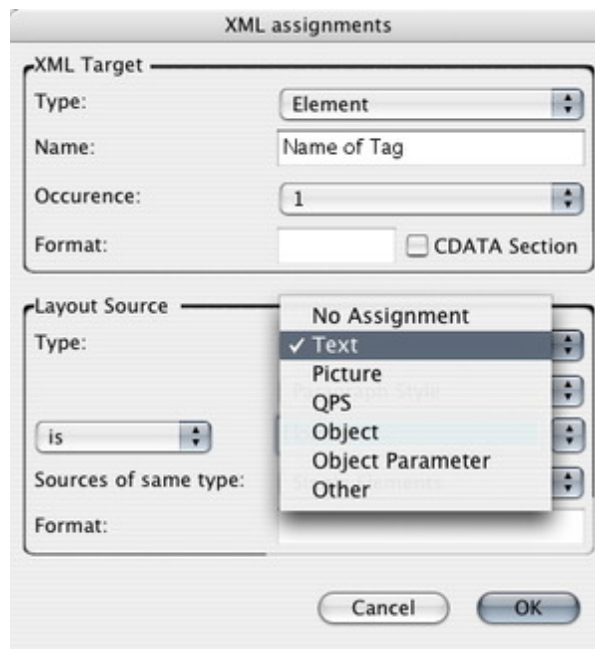


Text content

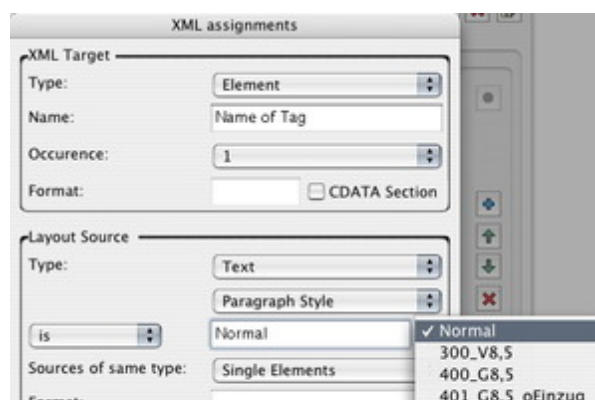
The configuration for different QPS publications and the structure and content of the XML files can be defined here.

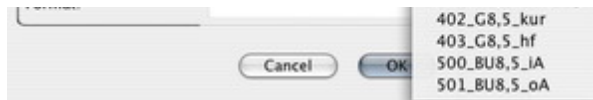


Add elements and attributes into this list. The structure of the XML file will be defined here.



The assignment of different source types and existing source names to new XML names can be done here.





The structure of the XML files can be built up hierarchically. Each element may contain sub elements or attributes. For example, a QPS article contains different components, the text could be formatted with paragraph and character styles or type styles.

