

## ex PrintUser Pro

Layouts which have reached a pre-defined status are automatically checked out, updated and sent to a printer, RIP or output as a PostScript file

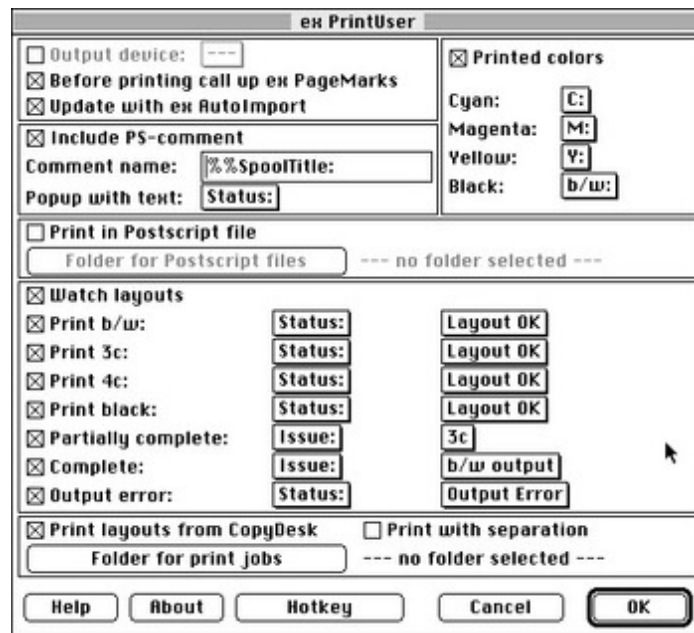
This XTension creates a virtual QPS user and automates prepress production. Layouts with set header information and which have reached a pre-defined status are automatically checked out, updated and sent to a pre-defined printer, RIP or as a PostScript file.

Through special settings you can i.e. send only the color forms to a RIP, while the document with a new status, automatically is checked back in (e.g. black still to be imaged). The status tells the Managing Editor, that only the black form can still be changed. If the layout is defined another status (i.e. image black), it is automatically checked out and printed.

With the help of other XTensions workflow can be automated even more: with [ex AutoImport](#), the layout checked out from ex PrintUser is automatically updated prior to imaging (e.g. exchange of ad place holders with EPS files);

With [ex PageMarks](#), barcodes and other information outside of the crop marked page format can be generated and printed;

With the [ex LaserWriterPro](#), all page set-ups for individual printers can be predefined and with ex StatusUpdate for CopyDesk you can even print out the complete layout right from CopyDesk by selecting the correct spooler.



### Category

- XTension

### Theme

- Printing/Imaging
- Editorial Workflow

### Related Products

- [ex AutoImport](#)
- [ex PageMarks](#)
- [ex LaserWriter Pro](#)

### Developer

- CoDesCo





**ex PrintUser Pro 1.11**

**Operating System**

**Mac OS:**

9

**Win:**

NT

**Software**

**QPS:**

1.x, 2.1x

**Language**

German, English

**Product Type**

Full Version

**Delivery Form**

digital

**Status**

Product available

[Request Proposal](#)