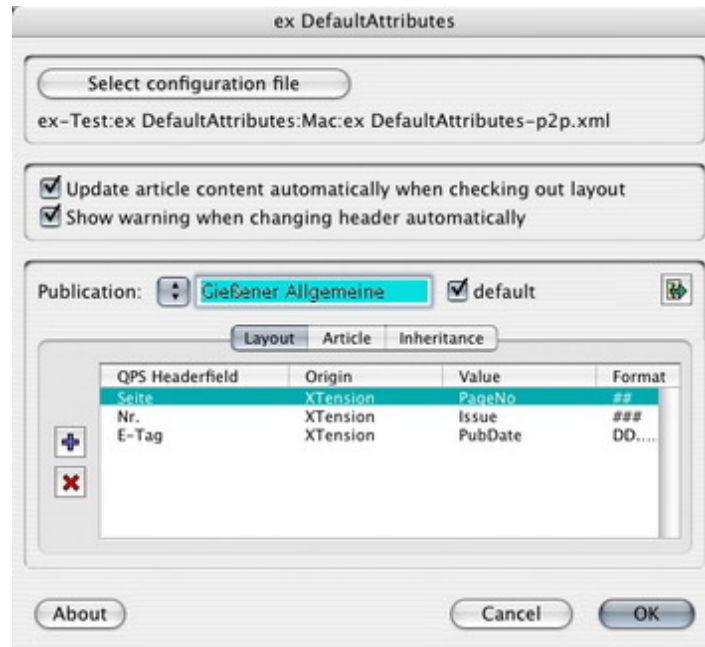


ex DefaultAttributes

ex DefaultAttributes enhances the checkin procedure of layouts and articles into QPS. Just set up QPS header fields which appear in the check in dialog with the previously defined contents. It is possible to set up QPS header fields for layouts and articles separately. Additionally the XTension inherits the contents of header fields from the layout to attached articles. The setup can be done for different publications.



Category

- XTension

Theme

- Editorial Workflow

Developer

- CoDesCo



ex DefaultAttributes

1.2

Operating System

Mac OS:

X 10.4

Win:

Vista, XP

Software

XPress:

6.5x

QPS:

3.5x

Language

German, English

Product Type

Full Version,

Demoversion (available
on request)

Delivery Form

digital

Status

Product available

[Request Proposal](#)