

Content search

The different data sources are administrated with detailed information in the preferences.

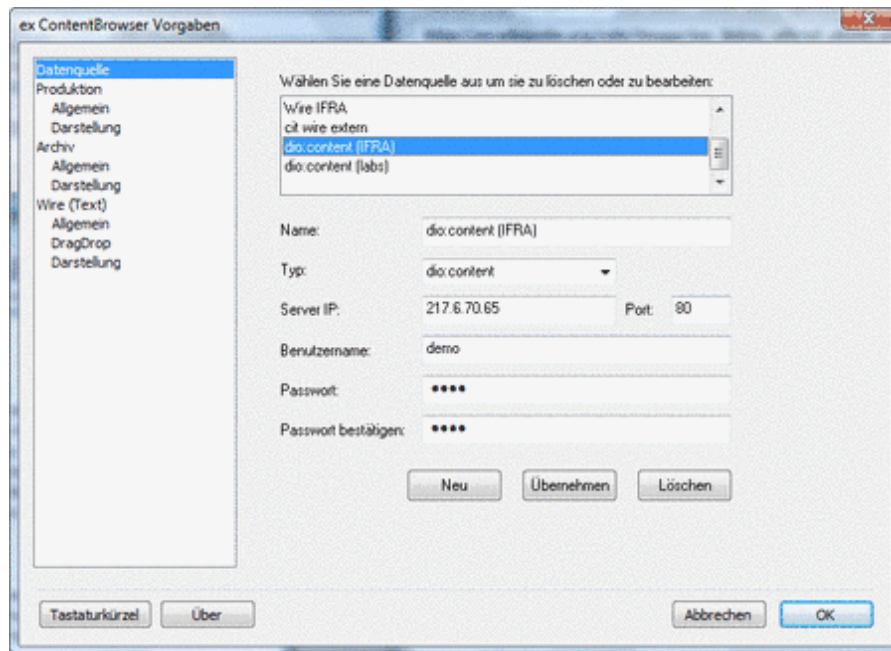


Figure 1

Content can be searched in the following data sources:

- Production databases
- Archive databases
- RSS Feeds
- Wires
- Searchengines

The clustersearch is a special feature and allows the user searching for newsclusters in different datasources.

As following exemplary results for the different searches are illustrated in figure 7-11.

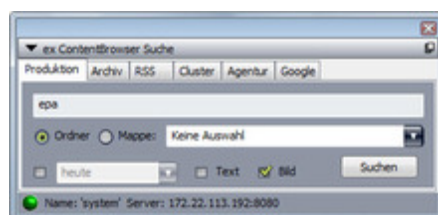


Figure 2



Figure 3

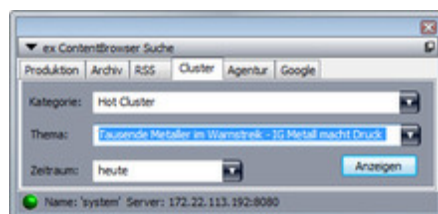


Figure 4

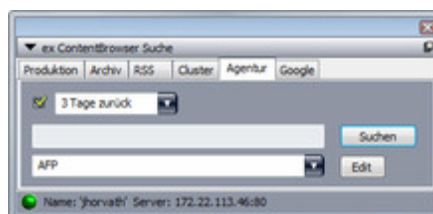


Figure 5

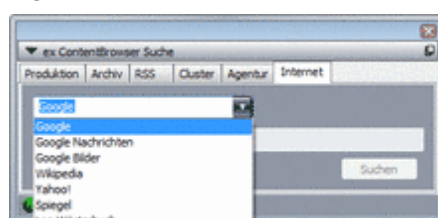


Figure 6

