

**fotoware**

**FotoWeb 7.0**

## Archiving and production workflow on the web

- **Instant availability**
- **On-demand image processing**
- **Powerful searching**
- **Workflow and production**
- **Leaf through multi-page PDF files**
- **Easy to install, configure and administer**
- **Low maintenance costs**

### **If you are running a**

- public relations site
- media archive for your partners
- image production workflow
- picture agency

- FotoWeb is the Digital Asset Management (DAM) solution you are looking for. It supports images, graphics, video, sound, and document file formats and has been designed to support all major web browsers on the market.

FotoWeb Standard and FotoWeb Enterprise cover the needs and requirements of all categories of users, whether small workgroups or demanding enterprise customers with thousands of users and millions of files.

## Accessibility

In response to today's demands for higher productivity FotoWeb enables corporate users and customers worldwide to easily search for and retrieve visual assets.

The close integration with FotoWare's FotoStation and Index Manager solutions means that new files can be made available in the system in just seconds.

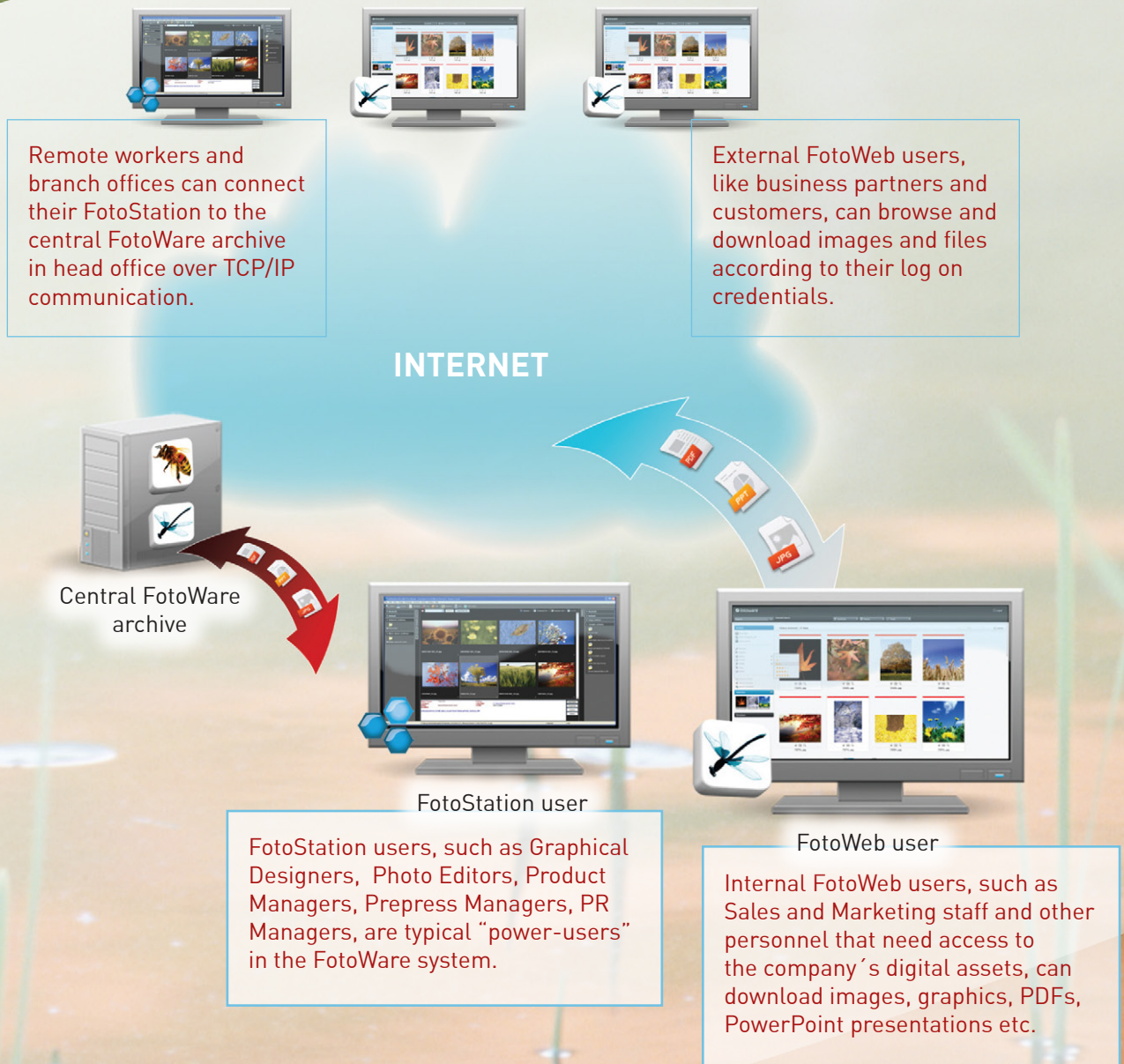
## Speed and connectivity

TCP/IP communications is a groundbreaking upgrade in client - server communication that opens up new opportunities for users working in a LAN/WAN environment, or over VPN. FotoStation Client users can now access FotoWeb archives remotely!

This means that by using a FotoStation Client, with all its powerful functionality at your fingertips, you can browse and download images from your branch office in Paris, or favorite picture agency, just like it was your own local archive! At a speed that knocks you out!



**FotoWeb** is the ideal tool for media professionals who need to share their visual assets in an intranet or extranet solution or provide access to thousands of users over the Internet.



***"FotoWeb meets our expectations 100%. It is now possible to search across departments and retrieve high-resolution images immediately,"***

Jørn Albertus  
Copenhagen Business School  
Denmark



# Search

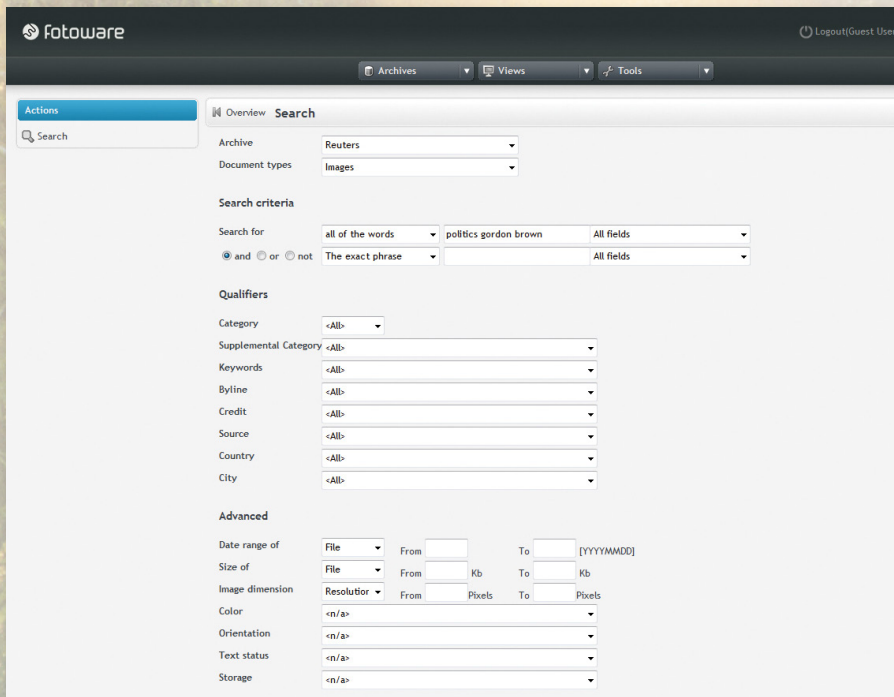
Search for any word in the archived files or in separately added metadata. Search words can also be selected from the automatically populated lists, or they can be defined by the system administrators.

By using Index Manager, FotoWare's powerful archive backbone, FotoWeb provides powerful search capabilities and instant responses even in archives with millions of files.

# Data Mining

Data Mining is a revolutionary way to explore your archive by offering alternative views of your data, based on keywords.

Drill Down queries let users easily navigate through vast numbers of files without searching.

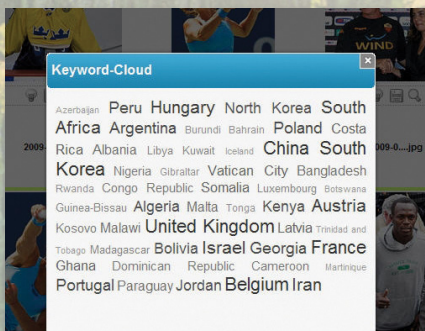


# Alerts

The Alerts feature will monitor the archive for you and send email updates of new files matching your criteria.

# Keyword cloud

With the keyword cloud we introduce a fun way of searching your FotoWeb archives. The cloud contains keywords from your archive with more frequently occurring words in larger type. Clicking on a word quickly displays the matching files.





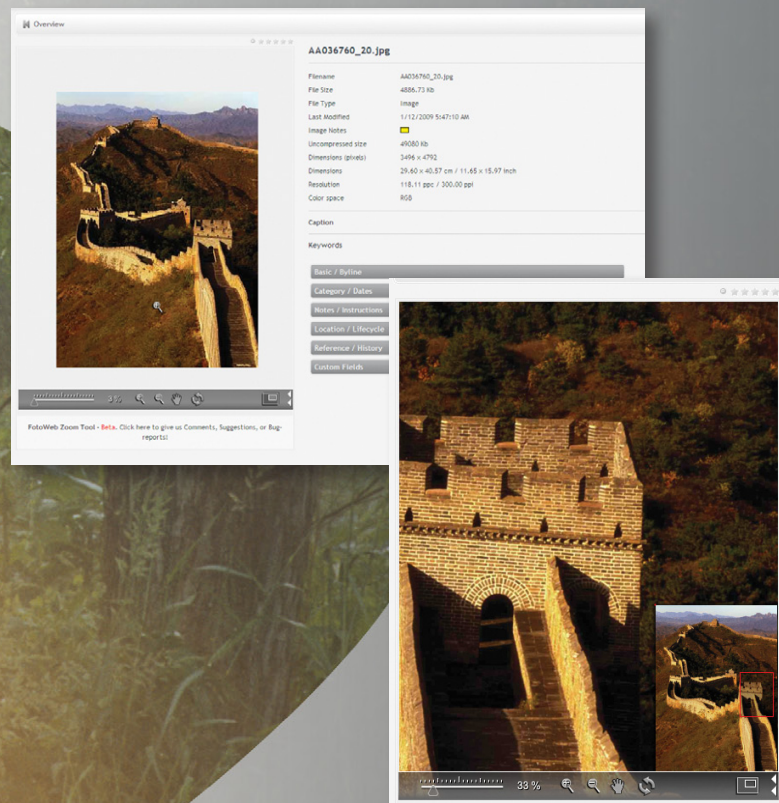
# High-resolution zooming

The high-resolution zoom tool lets a user zoom in and pan around the high-resolution image.

A user who requires greater detail when evaluating images can thus open the preview screen and, using a Flash-based plugin, zoom in and pan the image freely. When zoomed in, an expandable navigation map makes it possible to quickly pick an area to study more closely.

## Zoom and pan around using the various available tools:

- Slider – lets you adjust the zoom level by dragging
- Zoom tool – Zoom in or out in any part of the image.
- Hand tool – Pan around the image by clicking and dragging
- Reload button – reload the preview image
- Navigation map – expand or hide the navigation map.





## Great versatility and workflow capabilities

The new interface offers a radically more modern look and feel with much improved functionality in several key areas.

First off, the FotoWeb user interface has been completely remodeled using controls more similar to those found in desktop applications to provide a more contemporary look and feel. All existing functionality has of course been maintained or improved, and new functionality has been added.

Having logged in, a user can easily access archives and may now adjust the thumbnail sizes dynamically without having to reload the page. Additional metadata fields can be turned on or off at the click of a button to adjust the amount of information a user sees in the thumbnail grid. Direct links can be used to select and download files and to rate pictures or other document types.

End users control which information they want to see. This will be remembered in the browser.

### Need custom solutions?

Although FotoWeb works straight out of the box, it also has extensive customization potential. Powerful scripting tools make it easy to develop powerful custom solutions using simple scripting languages.

### Fully customizable

FotoWeb is supplied with a tool set to customize the appearance of the user interface according to your design profile and preferences. This can easily be done by persons with web design experience. Programming knowledge is not required.

FotoWeb is also a versatile tool for integrators and programmers. It offers powerful functionality for easy development of bespoke functionality or integration with other systems.

### Multi-language user interface

FotoWeb will automatically detect and appear in the following languages:

- Danish
- English (default language)
- Finnish
- French
- German
- Hebrew
- Italian
- Norwegian
- Spanish
- Swedish

# Workflow

**Create and control your workflow through FotoWeb's easily adaptable system, and integrate with other FotoWare applications to harness their power.**

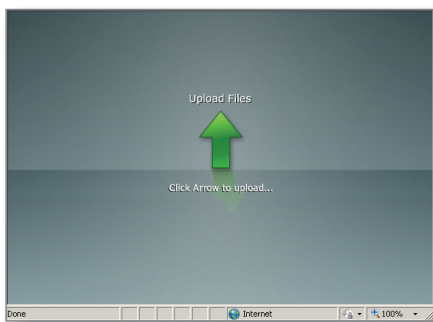
FotoWeb is based on an open standard and can easily be integrated with any existing workflow on the market. You can create pre-defined destinations to let users easily transmit files to any server anywhere in the world via standard protocols.

FotoWeb's powerful text editor uses the same dialog layout and keyword lists as FotoStation, FotoWare's leading DAM workstation. This ensures a harmonic user experience.

## File upload tool

The FotoWeb Upload Tool allows you to select any number of files to upload using a standard system dialog box and send them all off in a single operation.

The multi-file upload tool runs in the web browser and allows a user who has upload privileges to select any number of files directly from the file system and upload them to FotoWeb. FotoStation users can of course still use an HTTP upload action to upload their files to the FotoWeb server.



## PDF support

FotoWare 7.0 server applications have built-in support for the Adobe PDF standard. FotoWeb previews let you leaf through multi-page files.

## Image processing module

The image processing engine enables on-the-fly image processing and delivery. When a user requests to download a file or order it using the shopping cart, preset profiles control file format and color space conversion, resampling (useful if you don't want to download a 300-megabyte TIF file), custom watermarking and application of unsharp mask. The delivery module can also easily be integrated with a FotoWare Color Factory server or third-party processing software for even greater control of the image processing.

*"...we are equipped to solve today's problems and for developing solutions for tomorrow...."*



# FotoWeb Desktop

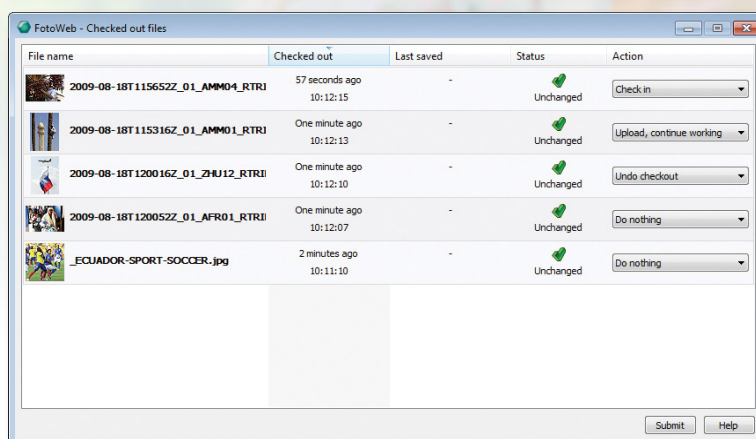
## Extend the power of the web to your desktop!

- Check-out and check-in of documents with file locking to prevent access to files in use
- Open files in the native local application, then save the file and check it back into FotoWeb
- Crop, edit and correct image files
- Optional module for FotoWeb

FotoWeb Desktop is an application designed to bridge the gap between a FotoWeb archive and your desktop computer. It offers the possibility to check out and download files from your web archive and edit them in their associated applications on the computer.

Special editing features are available for image files, such as Photoshop and Illustrator file formats, allowing you to crop, adjust colors and perform other high-resolution editing.

The check-out feature ensures that files downloaded to a client are locked for editing by other users of FotoWeb. FotoWeb Desktop handles all file types that the target system (Windows or Mac OS X workstation) recognizes, so that the file can be opened in its associated application and later stored back to its original location on the web server. Hence, Word documents, for example, can be checked out, edited and checked in to the server again afterwards. FotoWeb desktop will automatically take care of uploading the file to its correct location in the background.



The checkout feature also adds the benefit of letting you take your work with you. By checking out files to a laptop, you can bring the computer with you and make changes to the files when you have the time. Then, it's simply a matter of connecting to the FotoWeb server again when you want to check in the documents.





# Convenient system administration

FotoWare applications are configurable through a web-interface which makes it easy for an administrator to connect to the server from anywhere in the network and make the necessary adjustments.

## FotoWare Operations Center

FotoWare Operations Center is a common entry point for an overview of all installed server applications that allow system operators to monitor the FotoWare servers and start, stop or restart services as required. One click away from the Operations Center, and only accessible by the system administrator, are the server configuration sites where each FotoWare server is configured.

This approach to server maintenance and configuration gives only server administrators access to change the workflow setup, while users in the operators group have access to perform maintenance tasks.

Access to a FotoWare system can be controlled with Active Directory services. Hence, your existing network users and groups can likely be used as the basis for controlling access to archives, workflow destinations and not least, server configuration.

The FotoWare Operations Center keeps an overview of all FotoWare applications on the server. It lets system operators monitor and administer channel activity and pending file transfers in an easy to use web interface.

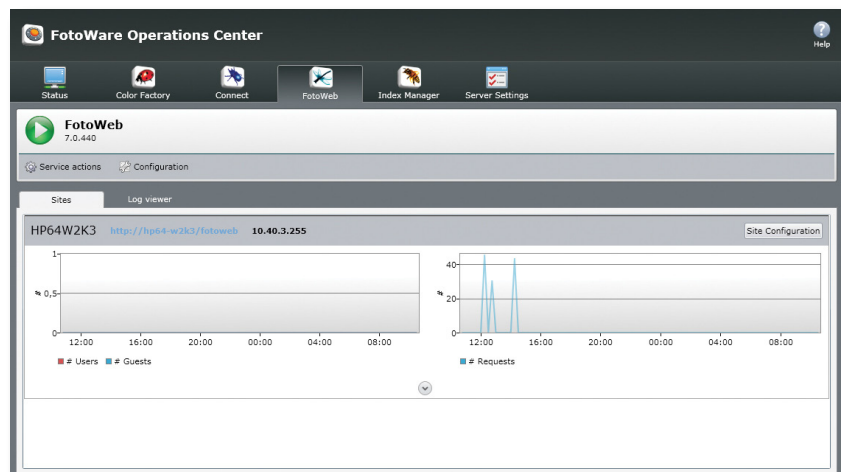
## Security

FotoWeb's sophisticated access control and filtering features make it easy to control which files various users can access and what they can do with them. Access privileges can be defined at the system, group or user level.

FotoWeb monitors and logs all activities, and administrators can easily request reports directly through the Web interface.

FotoWeb uses state-of-the-art encryption and authentication to protect the system from unauthorized access. Support for encrypted connections (HTTPS) ensures sensitive information is well protected.

Automatic backup routines makes system configuration and vital data easily accessible for transfer to secure storage.





## System requirements

### FotoWeb Client Requirements\*

Internet Explorer 8.0, Mozilla Firefox 3.5, Apple Safari 4, or Google Chrome  
Screen resolution 1280x1024 or higher  
Adobe Flash Player 10\*\*  
Microsoft Silverlight 3\*\*\*  
1.8 GHz processor or faster  
1 GB RAM

\*These requirements are for the latest version of the FotoWeb user interface. The installer ships with the template sets from version 6.0 and 2.7, which are compatible with older browser versions. These templates are not supported or maintained by FotoWare, and do not expose all of FotoWeb's functionality.

\*\* Only required for users with access to the Zoom, Flash Video, Flash Animation, and Page Browsing functionality.

\*\*\* Only required for users with access to the Windows Media Video Player or the administration and reporting user interfaces.

### FotoWeb Desktop Client Requirements\*

Windows XP, Vista, Windows 7, Apple Mac OS 10.5 or 10.6  
Minimum 1 GB RAM, 2 GB recommended

\*FotoWeb Desktop is required as a local installation for the following functionality: Check Out/In, Open in native application, Image Edit and Soft Crop

### FotoWeb Server Requirements

Windows Server 2003 with Service Pack 2 or Windows Server 2008\*  
Internet Information Services 6.0 or 7.0  
QuickTime 7.6.4 (Full installation)  
Adobe Flash Player 10  
Microsoft SQL Server Express 2005  
Microsoft Internet Explorer 8.0  
Microsoft .NET Framework 3.5  
Microsoft Silverlight 3  
Minimum 2 x 2.5 GHz Processors  
Minimum 2 GB RAM  
Minimum 10 Gb free disk space  
Local Administrator privileges for service account

\*Application is 32-bit, but is compatible with 32-bit and 64-bit editions of the operating system.

### FotoWeb Server Infrastructure Requirements

Access to SMTP Email Server  
Access to Index Manager 7.0 with SMB access to files

### Supported Directory Services

Windows Server 2003 Active Directory  
Windows Server 2008 Active Directory  
Novell eDirectory 8.8



## Feature comparison

|  | Description   | FotoWare<br>Cameleon Web | FotoWeb<br>Standard | FotoWeb<br>Enterprise |
|--|---|--------------------------|---------------------|-----------------------|
| <b>General</b>                           | Supports images, graphics, video, audio files                 | •                        | •                   | •                     |
|  | Alerts - receive email notification of new files              | •                        | •                   | •                     |
|  | File Upload via HTTP  | •                        | •                   | •                     |
|  | Highlights matching words in search results                   | •                        | •                   | •                     |
|  | Codepage/Unicode support in IPTC text                         | •                        | •                   | •                     |
|  | Remember me' login functionality                              | •                        | •                   | •                     |
|  | Shopping Cart functionality                                   | •                        | •                   | •                     |
|  | Deliver shopping cart content via email                       | •                        | •                   | •                     |
| <b>Workflow</b>                          | Guest users can download files                                | •                        | •                   | •                     |
|  | Imports text editor layouts from FotoStation                  | •                        | •                   | •                     |
|  | Supports multiple sets of quicklists for text editors         | •                        | •                   | •                     |
|  | Use hierarchical keyword lists for texting and navigation     | •                        | •                   | •                     |
|  | QuickText batch editing of Iptc text                          | •                        | •                   | •                     |
|  | Rename files, copy/move files between archives                | •                        | •                   | •                     |
|  | Data Mining with drill down queries for archive navigation    | •                        | •                   | •                     |
|  | Users can create and share albums                             | •                        | •                   | •                     |
|  | Transmit files to local servers                               | •                        | •                   | •                     |
|  | Transmit files to remote servers via FTP, HTTP                | •                        | •                   | •                     |
| <b>Administration<br/>and management</b> | Transmit files via email                                      | •                        | •                   | •                     |
|  | Reporting and statistics module                               | •                        | •                   | •                     |
|  | Web Administration Module                                     | •                        | •                   | •                     |
|  | Access control on user and group levels                       | •                        | •                   | •                     |
|  | Supports online registration of new users                     | •                        | •                   | •                     |
|  | Integration with Active Directory                             | •                        | •                   | •                     |
| <b>Customization<br/>and development</b> | Single Sign On in Windows networks                            | •                        | •                   | •                     |
|  | Customizable templates  |                          | •                   | •                     |
|  | Programming APIs  |                          |                     | •                     |
|  | Archive Agent (XML/HTTP interface)                            |                          |                     | •                     |
|  | Preview Agent (HTTP interface)                                |                          |                     | •                     |
| <b>System</b>                            | Supports embedded ASP scripts for customization/development   |                          |                     | •                     |
|  | Supports integration with 3rd party systems via Shopping Cart |                          |                     | •                     |
|  | Supports encrypted communication (HTTPS)                      | •                        | •                   | •                     |
|  | Delivered with MSDE database for log data (max 2Gb)           | •                        | •                   | •                     |
|  | Supports full Microsoft SQL Server for log data               |                          | •                   | •                     |
| <b>Licensing</b>                         | Supports SMTP Servers requiring authentication                | •                        | •                   | •                     |
|  | Unlimited user accounts                                       | •                        |                     | •                     |
|  | Licensed per named user                                       |                          | •                   |                       |
|  | Licensed per concurrent user                                  | •                        |                     |                       |
|  | Maximum concurrent users                                      | As licensed              | 125                 | Unlimited             |
|  | Maximum concurrent guests                                     | As licensed              | 300                 | Unlimited             |
|  | Number of sites   | 1                        | 1                   | 3                     |
|  | Additional sites can be purchased separately                  |                          |                     | •                     |

## Get in touch!

Ask our consultants and sales representatives how to solve your specific image and document problems and demands!

Get in touch with your nearest FotoWare Certified Partner for an appointment. FotoWare Partners are found in more than 40 countries around the world.



Headquarters:

FotoWare a.s  
OSLO  
Phone: + 47 22 03 24 00  
Email: [fotoware@fotoware.com](mailto:fotoware@fotoware.com)  
Web: [www.fotoware.com](http://www.fotoware.com)

FotoWare Germany GmbH  
HAMBURG  
Phone: + 49 (0) 40 8787 966 60  
Email: [info@fotoware.de](mailto:info@fotoware.de)  
Web: [www.fotoware.de](http://www.fotoware.de)

Find your local FotoWare Partner: [www.fotoware.com/ContactUs](http://www.fotoware.com/ContactUs)