

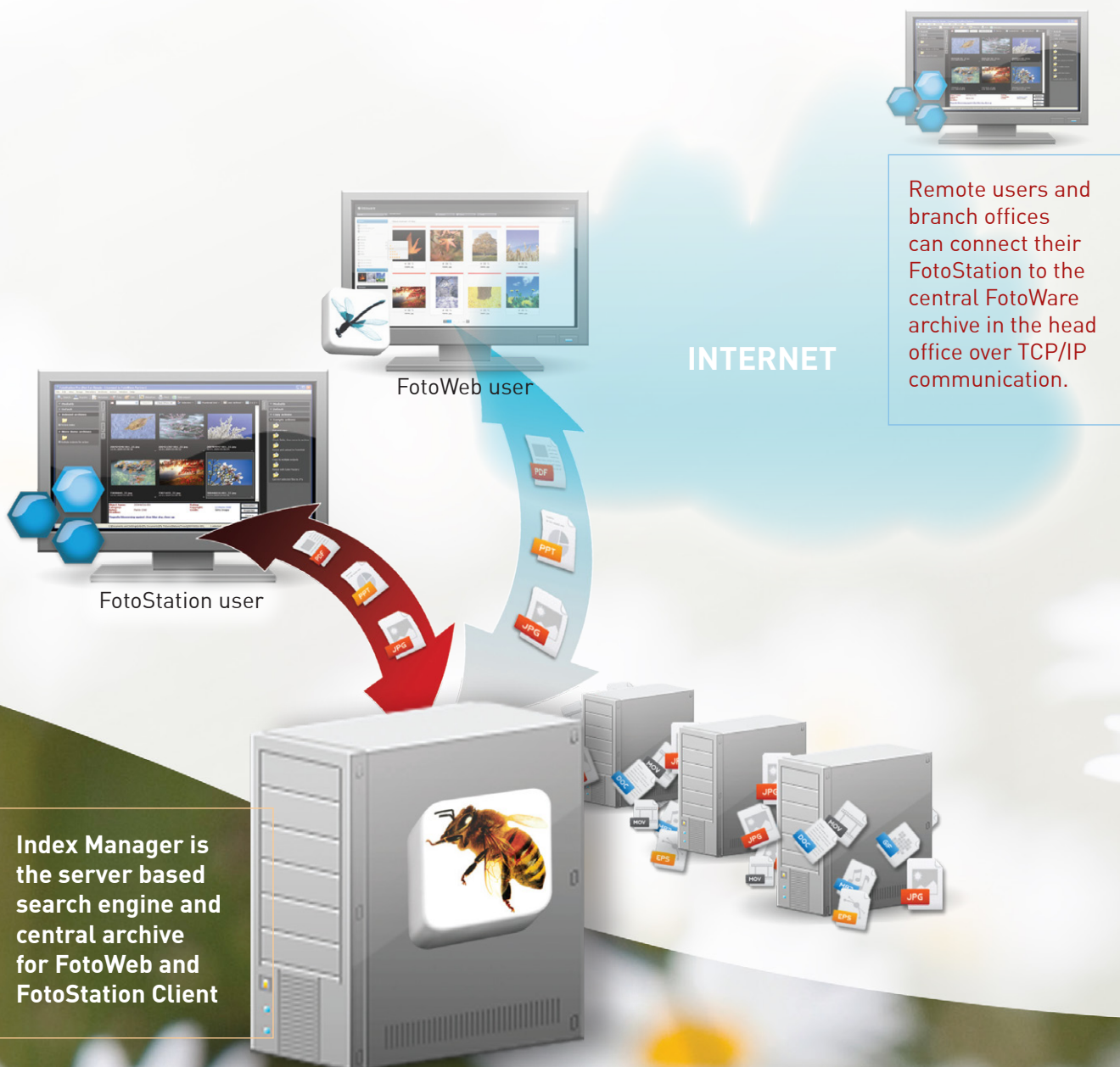


fotoware


Index Manager 7.0

The central search engine in a FotoWare installation

- Keeps track of all the files in your system
- Fast access and high speed search
- Combine multiple archives into a single large one, without compromising performance
- Super fast indexing of images, video-, audio and graphic files, PDF, EPS and Microsoft Office documents.
- Unlimited scalability for rapidly growing archives



Index Manager is the server based search engine and central archive for FotoWeb and FotoStation Client



Index Manager is a dedicated server application for indexing your archive and processing searches from clients such as FotoStation and FotoWeb.

Faster searches made easy

Index Manager is a dedicated server application for indexing your archive and processing searches from clients such as FotoStation and FotoWeb. Should your archive grow beyond the point where FotoStation can handle the searching on its own, an Index Manager installation provides a smooth transition without the need to completely redesign your workflow or export and import metadata records. Since all the metadata is actually stored in the files themselves, you simply set up Index Manager to index your files, point FotoStation the new index and keep working like before.

Massive speed improvement and connectivity in version 7.0

TCP/IP communications is a groundbreaking upgrade in client - server communication that opens up new opportunities for users working in a LAN/WAN environment, or in a VPN. FotoStation Client users can now access FotoWeb archives remotely!

This means that by using a FotoStation Client, with all its powerful functionality at your fingertips, you can browse and download images from your branch office in Paris, or favorite picture agency, just like from a local archive! At a speed that knocks you out!

PDF Support

FotoWare 7.0 server applications have built-in support for the Adobe PDF standard. Index Manager takes advantage of this functionality to create high-quality thumbnails and previews and to make page content searchable. With the new PDF support, indexing speed has increased significantly over previous versions.

Dynamic archives

Unlike a database solution, where files have to be imported, Index Manager monitors your

archive

archives and dynamically updates the index the moment that files are added, modified or removed from the archive. Offline media is updated manually upon request.

Larger archives

As your media archive grows, you will most likely find that your need for a fast, accurate search method becomes even more important. Index Manager offers greater power and flexibility by letting your archive grow to several hundred thousands of files, even millions. And with the Enterprise version of Index Manager you can take control of several networked Index Manager servers and combine them with a common entry point for browsing and searching.

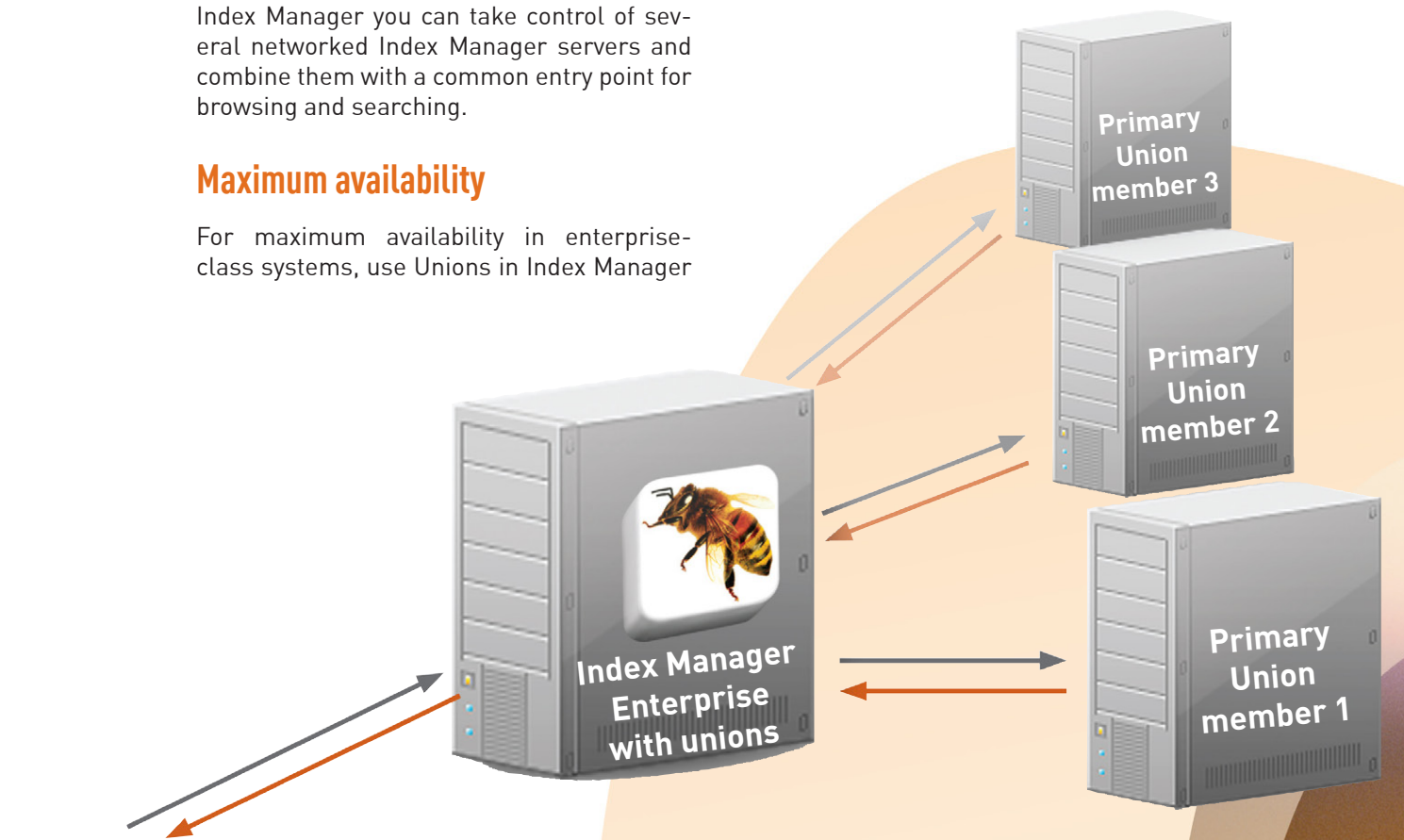
Maximum availability

For maximum availability in enterprise-class systems, use Unions in Index Manager

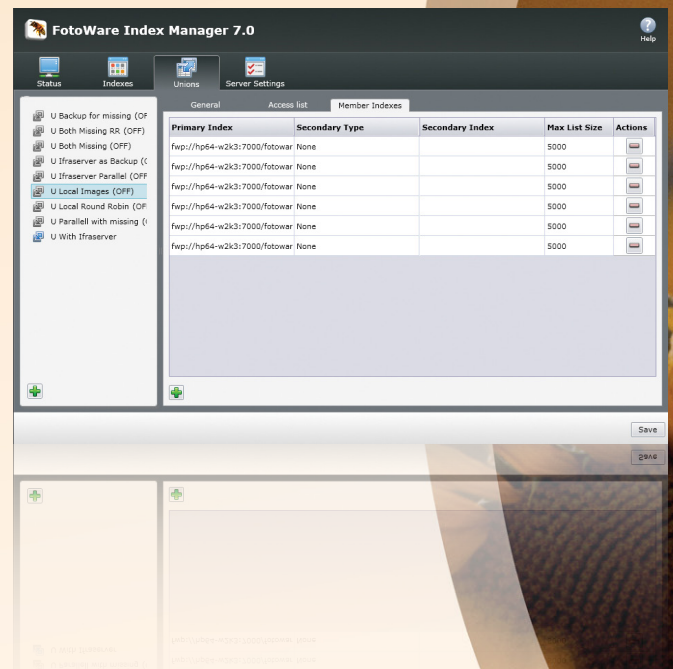
Enterprise to configure a backup index solution. That way, should an index server fail or be momentarily down for maintenance, the union server will shift all search responses to the identically configured backup server until the main server comes back on-line again.

Improved accuracy

After you configure your archive with Index Manager, your FotoStation clients receive a new set of search parameters that provide



Unions offer the possibility for users to search and access files from several different indexed archives through a single entry point



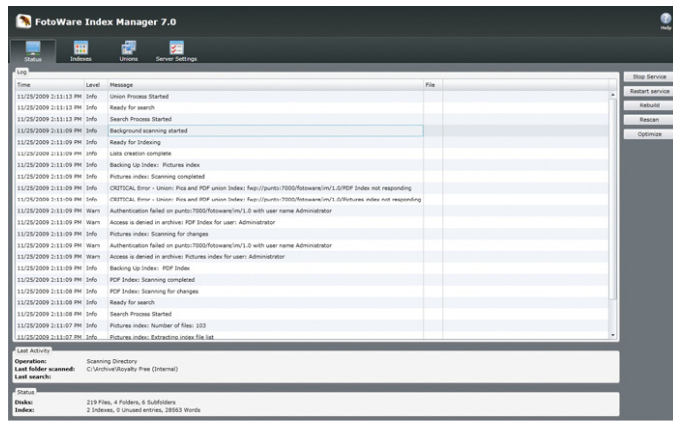
even greater search accuracy. Configure synonym lists, perform “fuzzy” searches if you don’t know the precise spelling, define “noise” words that are ignored by the search engine and set up stemming rules to define morphological variants of the same word when performing a search.

Cross-platform

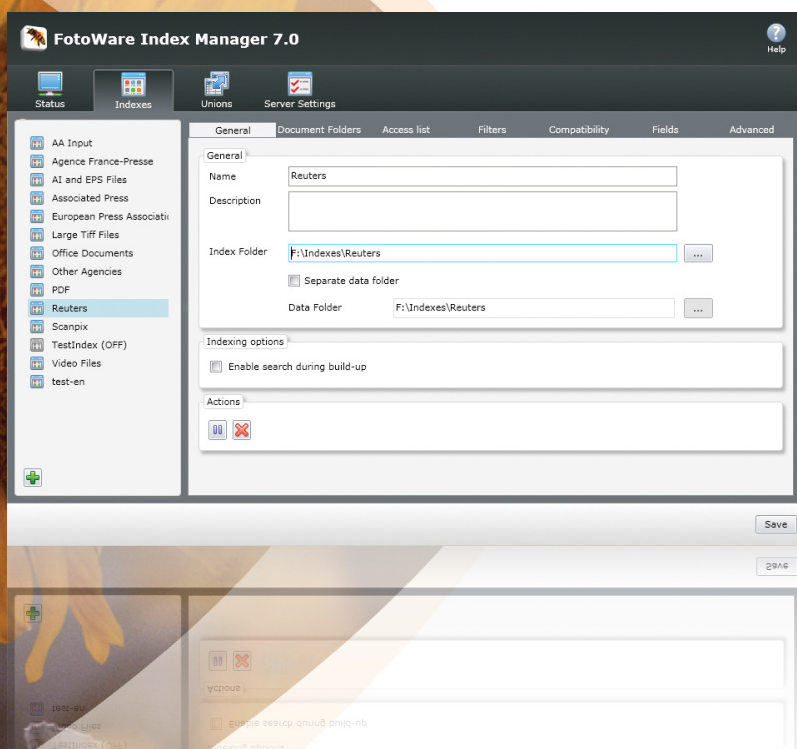
Index Manager runs on Windows Server 2003 (32-bit Edition) but can serve both Macintosh and Windows workstations. It will also take care of character mapping, so that all country-specific characters are preserved.

Ease of use – ease of maintenance

Your files can be located anywhere on the server – in several folders, on different hard disks or on removable media. Up to 32 online physical storage locations can be combined



with a common point of entry for the end users. Their workstations will display thumbnails of all files, and the user won’t need to know anything about the actual file structure on the server. Need more storage space? Add a new drive to the system and add its contents to the existing index for immediate access to the files in the new location. Index optimization and defragmentation can be set to occur automatically when fragmentation reaches a certain level and at a time that does not collide with system backup routines.



Convenient system administration

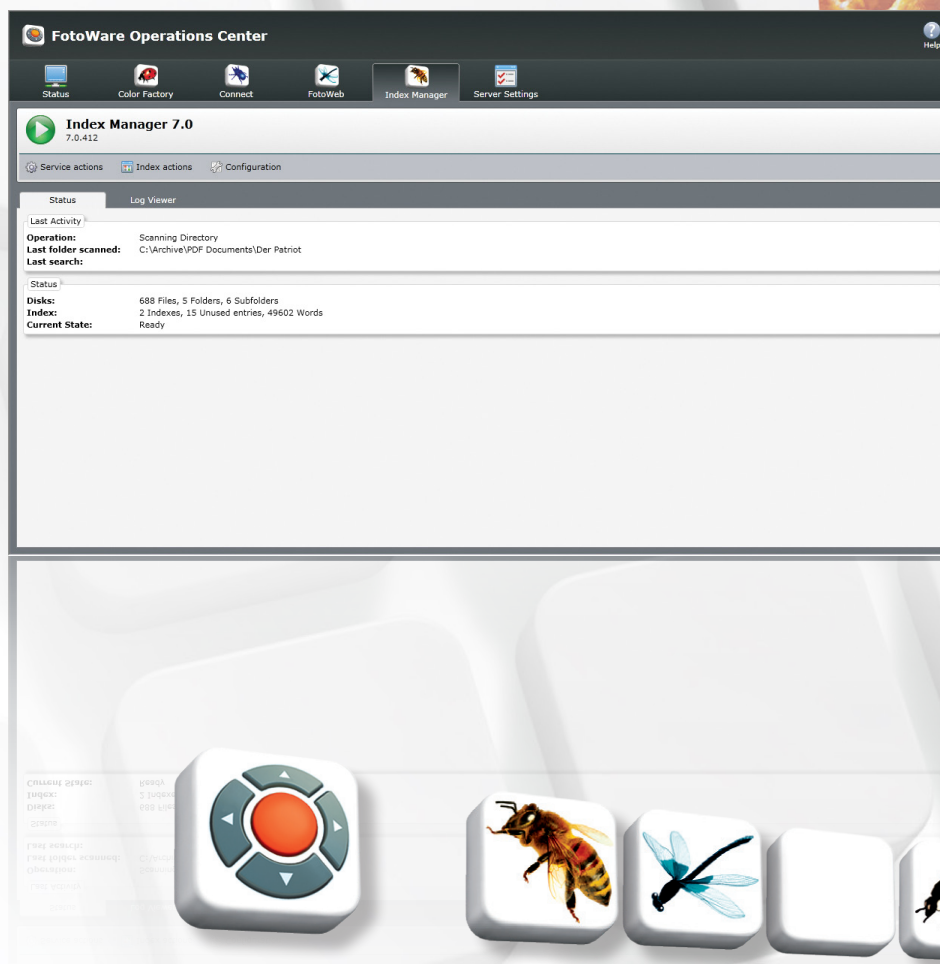
FotoWare applications are configurable through a web-interface which makes it easy for an administrator to connect to the server from anywhere in the network and make the necessary adjustments.

FotoWare Operations Center

FotoWare Operations Center is a common entry point for an overview of all installed server applications that allow system operators to monitor the FotoWare servers and start, stop or restart services as required. One click away from the Operations Center, and only accessible by the system administrator, are the server configuration sites where each FotoWare server is configured.

This approach to server maintenance and configuration gives only server administrators access to change the workflow setup, while users in the operators group have access to perform maintenance tasks.

Access to a FotoWare system can be controlled with Active Directory services. Hence, your existing network users and groups can likely be used as the basis for controlling access to archives, workflow destinations and not least, server configuration.



Index Manager Editions

Index Manager comes in two editions - Standard and Enterprise. Their differences are outlined below:

Index Manager Standard	Index Manager Enterprise
Sequential searching - One search at the time	Unions - for combining archives or creating backup index solutions
Limited multi processor support	Simultaneous processing of multiple searches
100.000 files per index	Full multi processor support
1.000.000 files per server	3.000.000 files per index
Up to 32 indexes	3.000.000 files per server
Indexes all files	Up to 32 indexes
	Indexes all files

System requirements

- Windows Server 2003 with Service Pack 2 or Windows Server 2008*
- Internet Information Services 6.0 or 7.0
- QuickTime 7.6.4 (Full installation)
- Microsoft .NET Framework 3.5
- Microsoft Silverlight 3
- Adobe Flash Player 10
- Microsoft SQL Server Express 2005
- Minimum 2 2.5 GHz Processors
- Minimum 2 Gb RAM
- Minimum 2 Gb free disk space

* Application is 32-bit, but is compatible with 32-bit and 64-bit editions of the operating system.

Optional add-ons

- Adobe InDesign Server is required for Adobe InDesign document support*
- Adobe Distiller Server or PSStill is required for certain vector file formats
- Microsoft Office 2007 is required for certain document file formats

* Support will be introduced in Index Manager 7.0 Service Release 2.

Get in touch!

Ask our consultants and sales representatives how to solve your specific image and document problems and demands!

Get in touch with your nearest FotoWare Certified Partner for an appointment. FotoWare Partners are found in more than 40 countries around the world.



Headquarters:

FotoWare a.s
OSLO
Phone: + 47 22 03 24 00
Email: fotoware@fotoware.com
Web: www.fotoware.com

FotoWare Germany GmbH
HAMBURG
Phone: + 49 (0) 40 8787 966 60
Email: info@fotoware.de
Web: www.fotoware.de

Find your local FotoWare Partner: www.fotoware.com/ContactUs