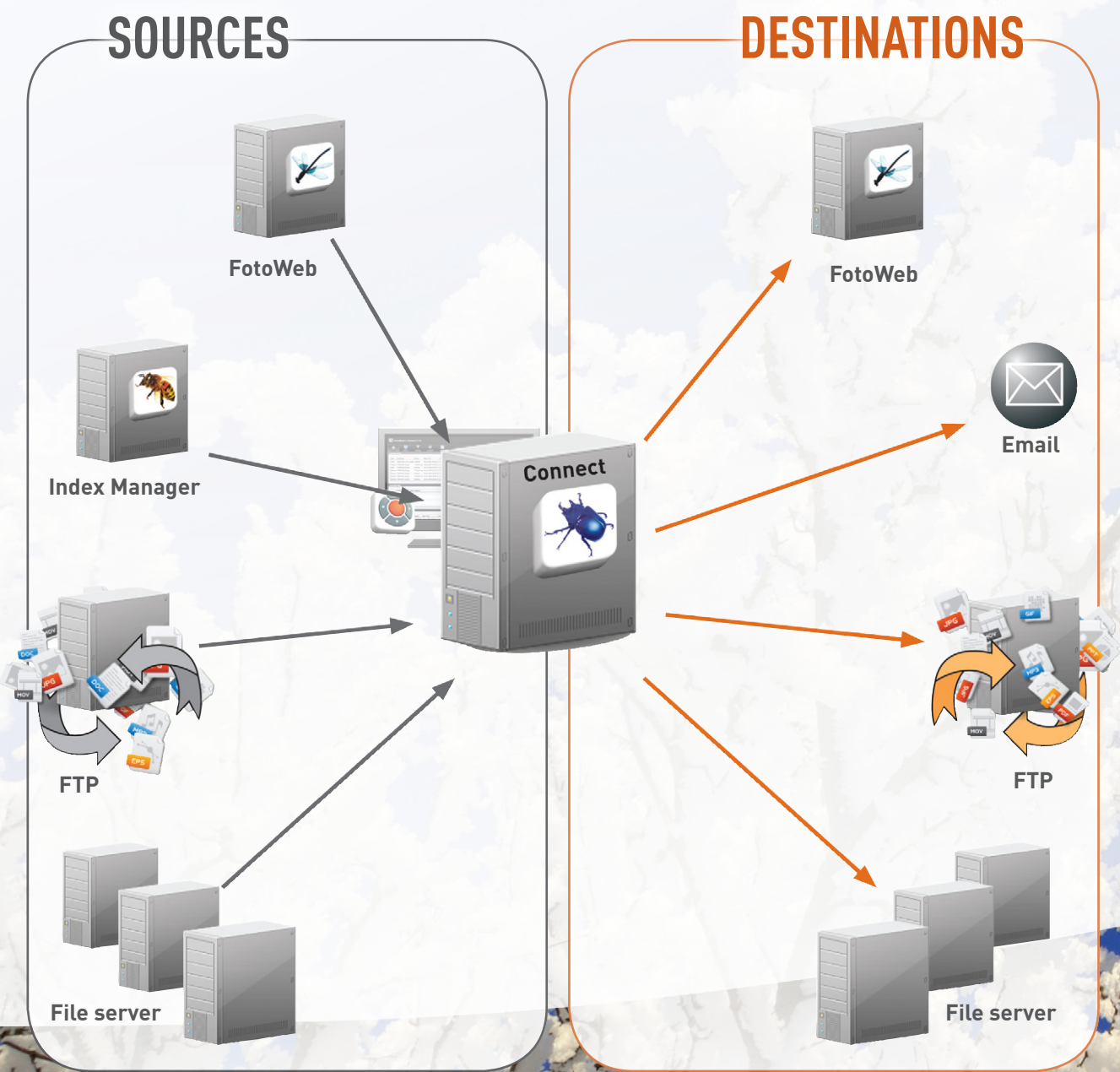


**fotoware**

**Connect 7.0**

## Enterprise-class file transfer automation

- Automated file transfer across many protocols
- Support for secure protocols
- Advanced, configurable file routing with file filtering capabilities
- Automatic file renaming and character mapping
- Set-it-and-forget-it functionality – yet easy to reconfigure when needed



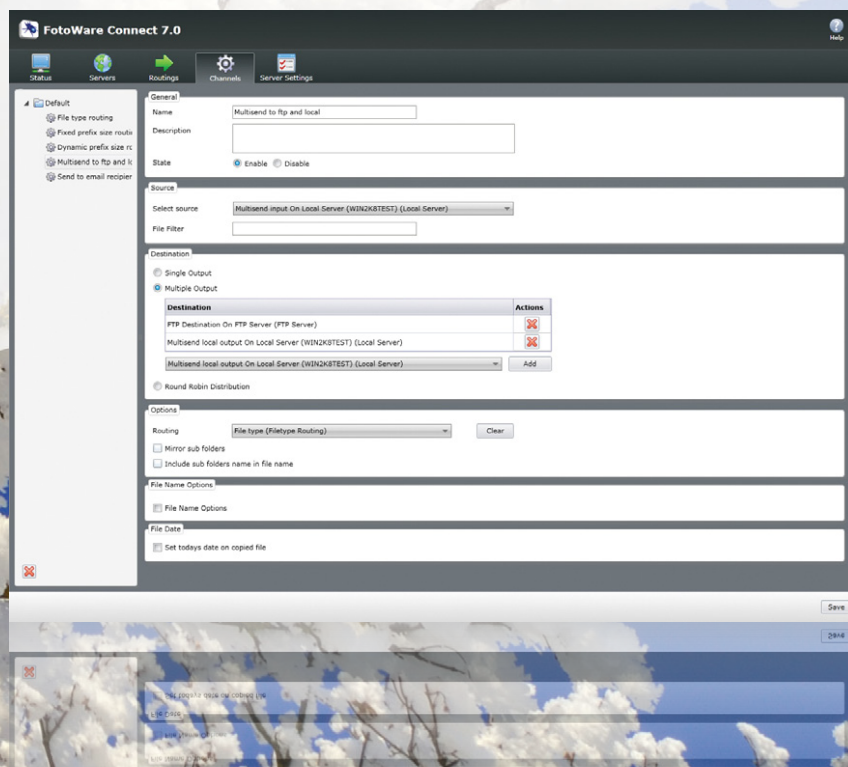
**Connect 7.0 is the new file transfer automation server from FotoWare. It monitors multiple inputs and distributes files from local or network folders, FTP sites, FotoWeb servers, and email servers. It is the ideal tool for centralized archives with a need to distribute files to a number of branch offices, or as an in-house utility to automate workflow operations.**

## Channels

Each workflow channel can be configured with optional routing rules to fine-tune which files should be fetched and how they should be sorted in their destination folders. Connect 7.0 can also act as a central hub where files can be transferred from one remote location to another. This makes it possible, for instance, to utilize a FotoWeb archive search as the input and a remote FTP location as the output without having to configure two channels.

## Easy input

Users all over your organization can easily access and use Connect's services. To transfer a file, a user only needs to put the file in one of Connect's watched input folders, and off it goes.



# transfer

## Powerful file transfer automation

Connect can transfer and mirror entire folder structures, and can therefore easily transfer entire websites and archives. It can also be configured to rename files or parts of the file name in the process to comply with the destination system's file naming conventions.

## Parallel processing for high-end file distribution

Connect is suitable for large-scale file distribution to multiple destinations. Its multi-threaded architecture means it will monitor and transfer files at a high rate to many destinations simultaneously. What's more, with an unlimited number of outputs per channel, files dropped into a single folder can be transferred to a number of destinations fully automatically.

The screenshot displays the FotoWare Connect 7.0 user interface. The top navigation bar includes 'Status', 'Servers', 'Routings', 'Channels', and 'Server Settings'. The main window is divided into several sections:

- Service actions:** Shows 'Connect 7.0 7.0.411'.
- Status:** A 'Log Viewer' tab is active, displaying a table of current activity.
- Channel Status:** A list of channels with their respective settings.
- Server Configuration:** A detailed view for an 'FTP Server' with various fields for protocol, host, authentication, and port.

Type	Channel Name	File Name	Start Time	Size	Progress	Status
Send	Multisend to ftp and local	696027_03.jpg.jpg	04.03.2010 15:50:56	734,25 KB	100 %	Completed
Send	Multisend to ftp and local	696027_03.jpg.jpg	04.03.2010 15:56:01	734,25 KB	100 %	Completed
Send	Multisend to ftp and local	696102_31.jpg.jpg	04.03.2010 15:56:01	696,19 KB	100 %	Completed
Send	Multisend to ftp and local	696102_31.jpg.jpg	04.03.2010 15:56:57	696,19 KB	100 %	Completed
Send	Multisend to ftp and local	696102_33.jpg.jpg	04.03.2010 15:56:01	673,93 KB	100 %	Completed
Send	Multisend to ftp and local	696102_33.jpg.jpg	04.03.2010 15:56:58	673,93 KB	100 %	Completed
Send	Multisend to ftp and local	696104_05.jpg.jpg	04.03.2010 15:56:01	867,66 KB	100 %	Completed
Send	Multisend to ftp and local	696104_05.jpg.jpg	04.03.2010 15:56:05	867,66 KB	100 %	Completed
Send	Fixed prefix size routing	fea2009694027_KRISTEL_CARRIST.jpg.jpg	04.03.2010 15:58:53	271,92 KB	0 %	Completed
Send	Fixed prefix size routing	fea2009694027_03.jpg.jpg	04.03.2010 15:58:53	734,25 KB	0 %	Completed

The server configuration window shows the following details:

- Name:** FTP Server
- Description:** [Empty field]
- Protocol:** FTP Server
- Host Name:** ftp.acme.com
- Max connections:** 8
- Authentication:** Username: Administrator, Password: [Masked]
- Protocol Settings (FTP):** Port: 21, Use passive FTP: [Checked]

## File retrieval

Connect can regularly check a remote server for new files and pick up new ones as they arrive. If your business receives large volumes of files that require processing of any kind, Connect can distribute these files in a round-robin pattern for load or storage balancing on the destination servers.

## File sorting

Connect will sort files based on prefixes in the filenames or the file type (extension-based). The prefixes can be of variable length and associated with a longer directory name to make the folder structure easier to understand for users. Files in the output can be renamed automatically to avoid overwriting existing files, and Connect can be configured to rename a file or change a part of its file name based on preset conditions.

## Automatic virus scanning

All of Connect's inputs can be configured to make use of a 3rd party virus scanner and lets you choose how to treat any infected files. They can be routed directly to a quarantine folder, permanently deleted or processed as usual. In the latter case, an entry will be made in the log to indicate that the file is infected.

## Activity logging

Connect writes a detailed log of all activity to let you verify every transmission. It is also possible to log only errors for easier troubleshooting and recovery.

The screenshot displays the 'FotoWare Connect 7.0' configuration window, specifically the 'Routing' tab. The interface is divided into several sections:

- General:** Includes fields for 'Name' (set to 'fixed prefix size'), 'Description', and 'Routing Type' (set to 'Prefix Routing').
- Prefix:** A table for defining prefix routing rules. It has columns for 'Prefix Size', 'Order', and 'Actions'.

Prefix Size	Order	Actions
3	1	[X] [X]
4	2	[X] [X]
- Associate prefix and folder:** A table for mapping prefixes to folders. It has columns for 'Prefix', 'Folder', and 'Actions'.

Prefix	Folder	Actions
spo	sports	[X] [X]
fea	feature	[X] [X]
int	international	[X] [X]
ent	entertainment	[X] [X]

At the bottom, there are 'Save' and 'Cancel' buttons, and a checkbox for 'Route to folder with prefix name if no associated folder is found'.

# Convenient system administration

FotoWare applications are configurable through a web-interface which makes it easy for an administrator to connect to the server from anywhere in the network and make the necessary adjustments.

## FotoWare Operations Center

**FotoWare Operations Center** is a common entry point for an overview of all installed server applications that allow system operators to monitor the FotoWare servers and start, stop or restart services as required. One click away from the Operations Center, and only accessible by the system administrator, are the server configuration sites where each FotoWare server is configured.

Access to a FotoWare system can be controlled with Active Directory services. Hence, your existing network users and groups can likely be used as the basis for controlling access to archives, workflow destinations and not least, server configuration.

This approach to server maintenance and configuration gives only server administrators access to change the workflow setup, while users in the operators group have access to perform maintenance tasks.



**FotoWare Operations Center**

Navigation: Status, Color Factory, Connect, FotoWeb, Index Manager, Server Settings

**Connect 7.0**  
7.0.411

Service actions | Configuration

Current Activity

Type	Channel Name	File Name	Start Time	Size	Progress	Status
Send	Multisend to ftp and local	660102-MARTINI.jpg.jpg	04.03.2010 15:56:C	339,46 KB	100 %	Completed
Send	Multisend to ftp and local	660102-MARTINI.jpg.jpg	04.03.2010 15:56:C	339,46 KB	100 %	Completed
Send	Multisend to ftp and local	660107-KRISTEL CARRISI_.jp.jpg	04.03.2010 15:56:C	271,92 KB	100 %	Completed
Send	Multisend to ftp and local	660107-KRISTEL CARRISI_.jp.jpg	04.03.2010 15:56:C	271,92 KB	100 %	Completed
Send	Multisend to ftp and local	670130-RoccoBarocco_NEWS.jp.jpg	04.03.2010 15:56:C	428,72 KB	100 %	Completed
Send	Multisend to ftp and local	670130-RoccoBarocco_NEWS.jp.jpg	04.03.2010 15:56:1	428,72 KB	100 %	Completed

Channel Status

Status	Channel Name	Files in Queue
Enabled	Dynamic prefix size routing	0
Enabled	File type routing	0
Enabled	Fixed prefix size routing	0
Enabled	Multisend to ftp and local	0
Enabled	Send to email recipients	0

## System requirements

- Windows Server 2003 with Service Pack 2 or Windows Server 2008\*
- Internet Information Services 6.0 or 7.0
- Microsoft .NET Framework 3.5
- Microsoft Silverlight 3
- Minimum 1 2.0 GHz Processors
- Minimum 1 Gb RAM
- Local Administrator privileges for service account

\*Application is 32-bit, but is compatible with 32-bit and 64-bit editions of the operating system.

## Feature overview

- **Multithreaded architecture for simultaneous file transfer in multiple channels**
- **Unlimited number of outputs per channel**
- **Support for several common protocols:**
  - Local file system
  - Windows shares (SMB)
  - FTP, SFTP, FTPS
  - FotoWeb
  - Index Manager (input)
  - Email (output)
- **Configurable file sorting methods:**
- **Automatic file renaming**
- **Configurable load/storage balancing scheme in destinations**
- **Automatic virus scanning using 3rd party virus scanner with configurable handling of infected files**

## Get in touch!

Ask our consultants and sales representatives how to solve your specific image and document problems and demands!

Get in touch with your nearest FotoWare Certified Partner for an appointment. FotoWare Partners are found in more than 40 countries around the world.



### Headquarters:

FotoWare a.s  
OSLO  
Phone: + 47 22 03 24 00  
Email: [fotoware@fotoware.com](mailto:fotoware@fotoware.com)  
Web: [www.fotoware.com](http://www.fotoware.com)

FotoWare Germany GmbH  
HAMBURG  
Phone: + 49 (0) 40 8787 966 60  
Email: [info@fotoware.de](mailto:info@fotoware.de)  
Web: [www.fotoware.de](http://www.fotoware.de)

Find your local FotoWare Partner: [www.fotoware.com/ContactUs](http://www.fotoware.com/ContactUs)